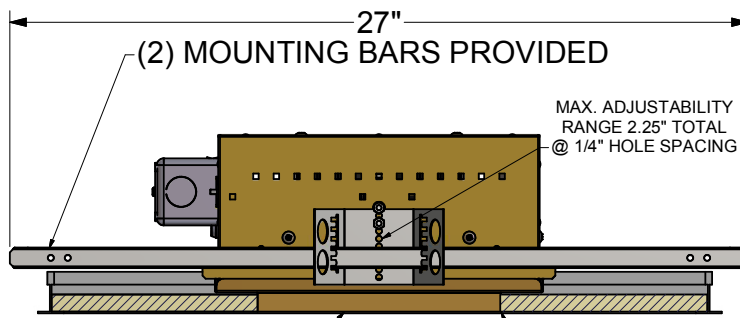


## STANDARD MOUNTING HARDWARE INSTALLATION INSTRUCTIONS

(2) 27" MOUNTING BARS & (2) WING BRACKETS WITH COMBINED VERTICAL ADJUSTABILITY OF 4.0"

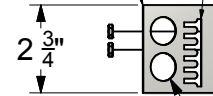


RECOMMENDED HOLE CUTOUT DIMENSION SPECIFIED IN EACH LUMINAIRE CUT SHEET

THE BOTTOM EDGE OF HOUSING PLASTER FLANGE PROTRUSION MUST BE FLUSH WITH (OR WITHIN 1/8" ABOVE) THE BOTTOM EDGE OF THE CUT HOLE.

ADJUSTABLE WING MOUNTING BRACKET

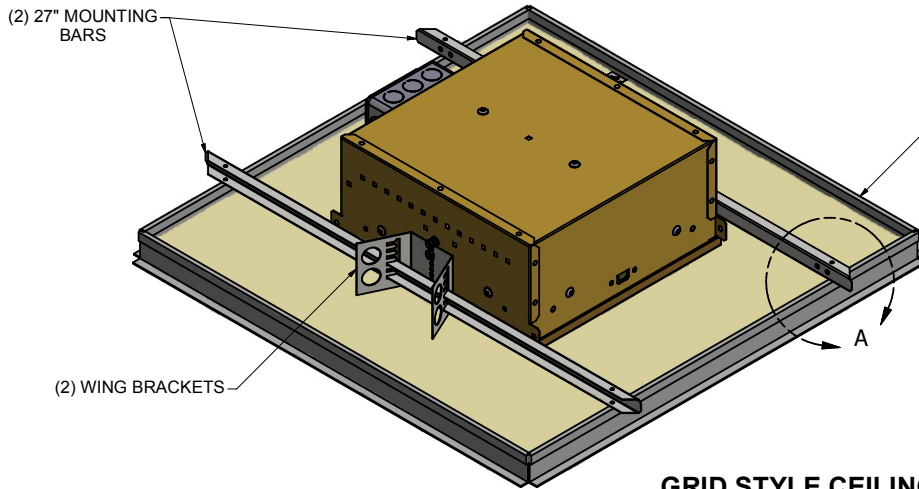
ALSO ACCEPTS 1/2"x1/2"x1-1/2" LATHING CHANNEL



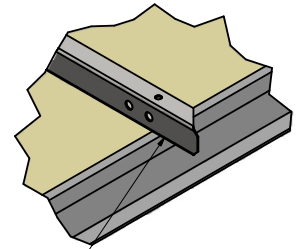
EXTERIOR HOUSING PLATE

FOR 1/2" TRADE SIZE CONDUIT

## TYPICAL COMMERCIAL INSTALLATIONS



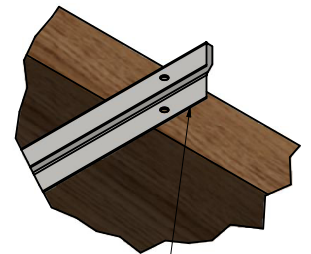
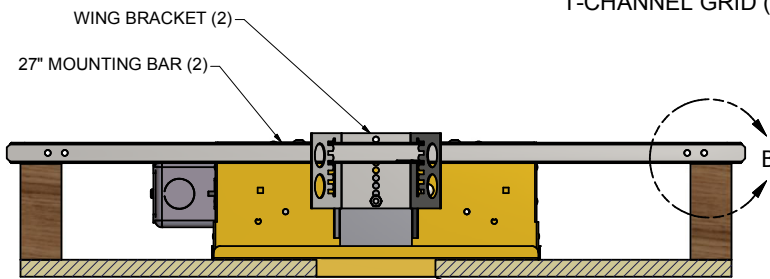
DETAIL A



## GRID STYLE CEILING INSTALLATION

BE SURE TO ADJUST VERTICAL POSITION OF MOUNTING BARS WITHIN THE BRACKET SO THAT THEY REST ON ADJACENT T-CHANNEL GRID (SECURE TO GRID AS REQUIRED)

DETAIL B



HOUSING PLASTER FLANGE PROTRUSION. ALIGN WITH BOTTOM OF CEILING MATERIAL

INSTALL TRIM ASSEMBLY AFTER INSTALLING LUMINAIRE HOUSING (REFER TO SHEET # 4)

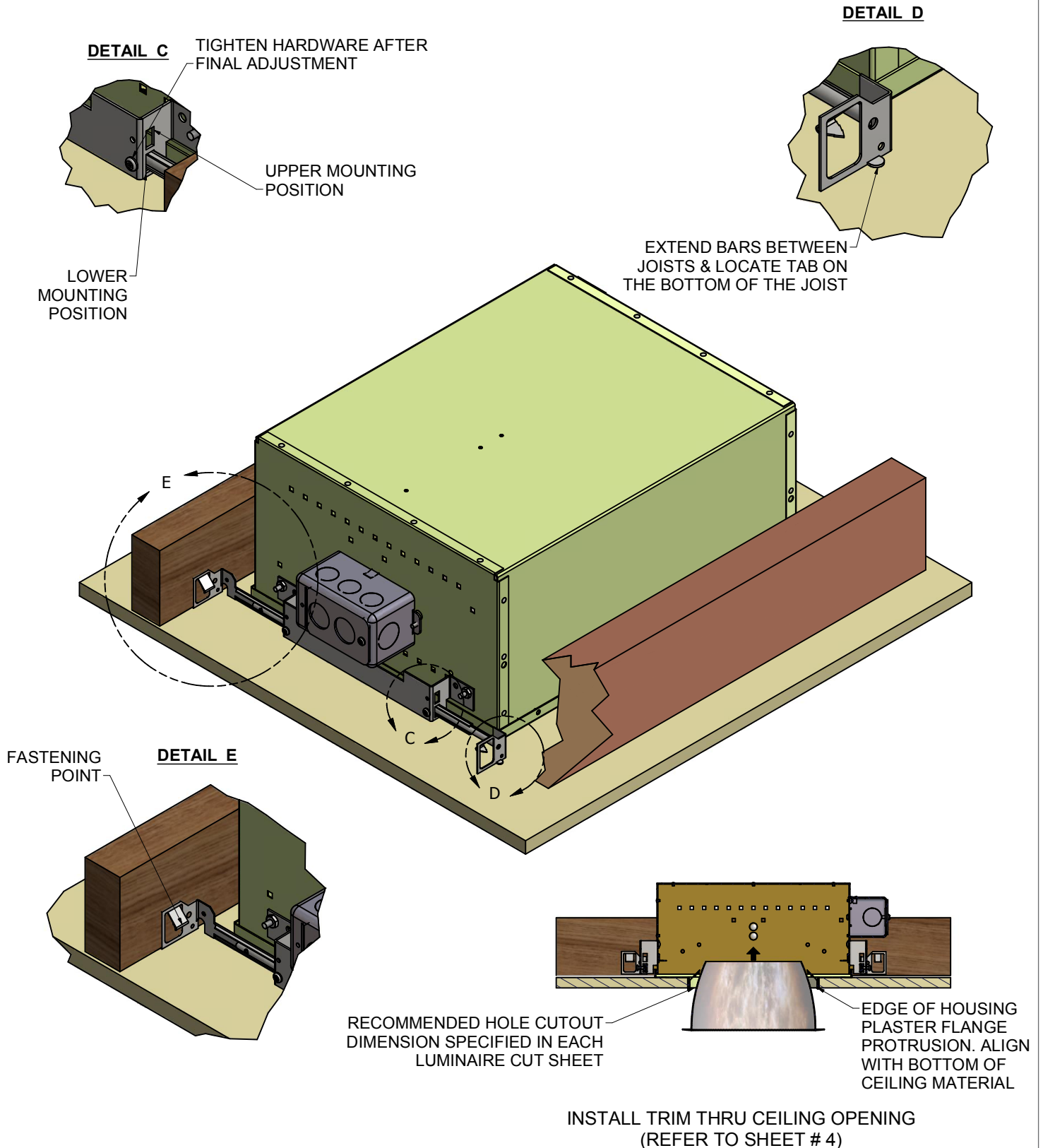
## DRYWALL / PLASTER CEILING INSTALLATION

BE SURE TO ADJUST VERTICAL POSITION OF MOUNTING BARS WITHIN THE BRACKET SO THAT THEY REST ON ADJACENT CEILING JOISTS (SECURE TO JOISTS AS REQUIRED)

INSTALL IN ACCORDANCE WITH ALL APPLICABLE NATIONAL AND LOCAL ELECTRIC CODES  
INSTALL IN ACCORDANCE WITH ALL MARKINGS APPEARING ON OR INSIDE LUMINAIRES

### OPTIONAL RESIDENTIAL MOUNTING INSTRUCTIONS (OPTION: -RH)

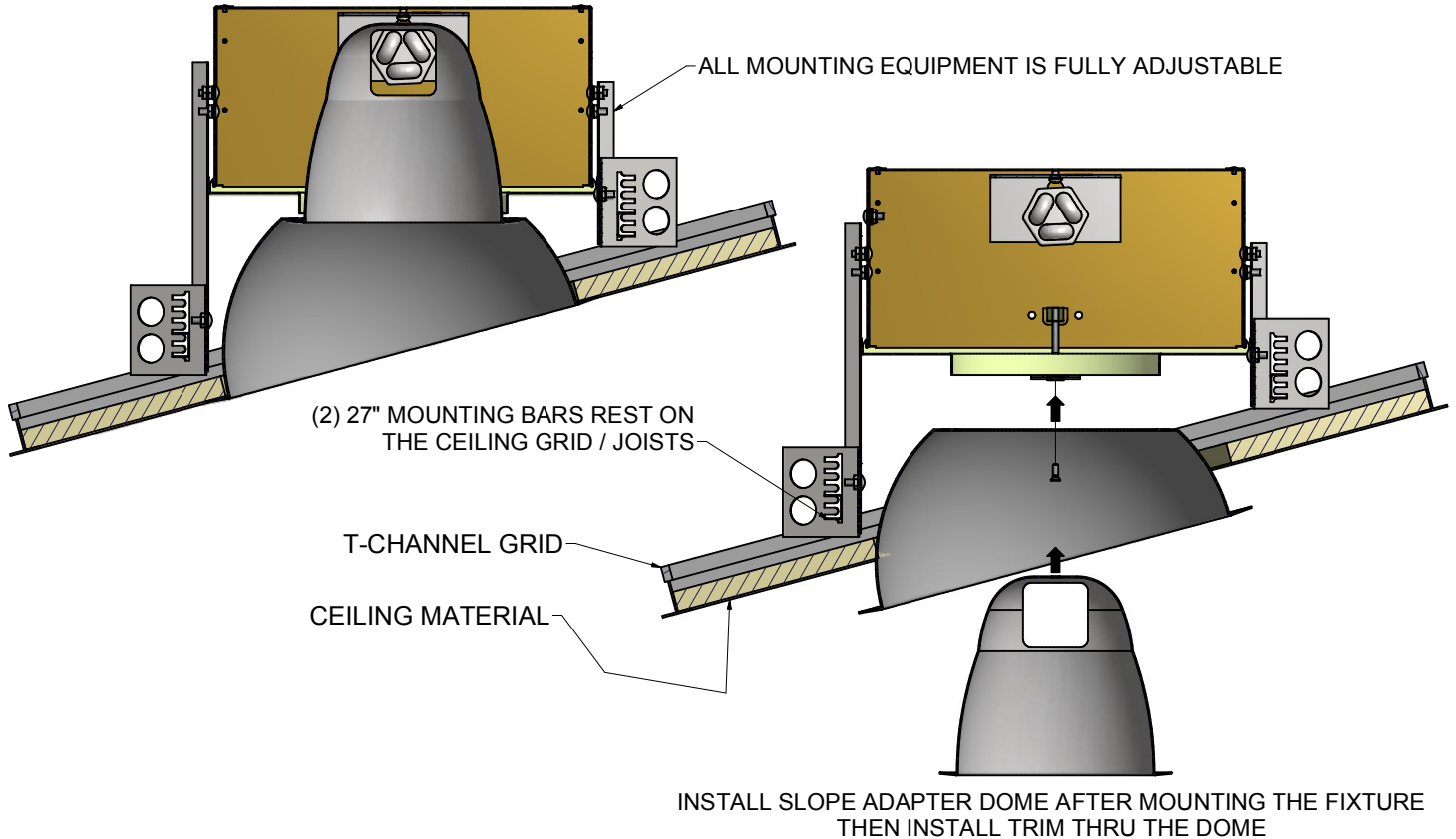
(2 MOUNTING BARS WITH 14-1/8" - 25-7/8" LINEAR ADJUSTABILITY & 5/8" VERTICAL ADJUSTABILITY)



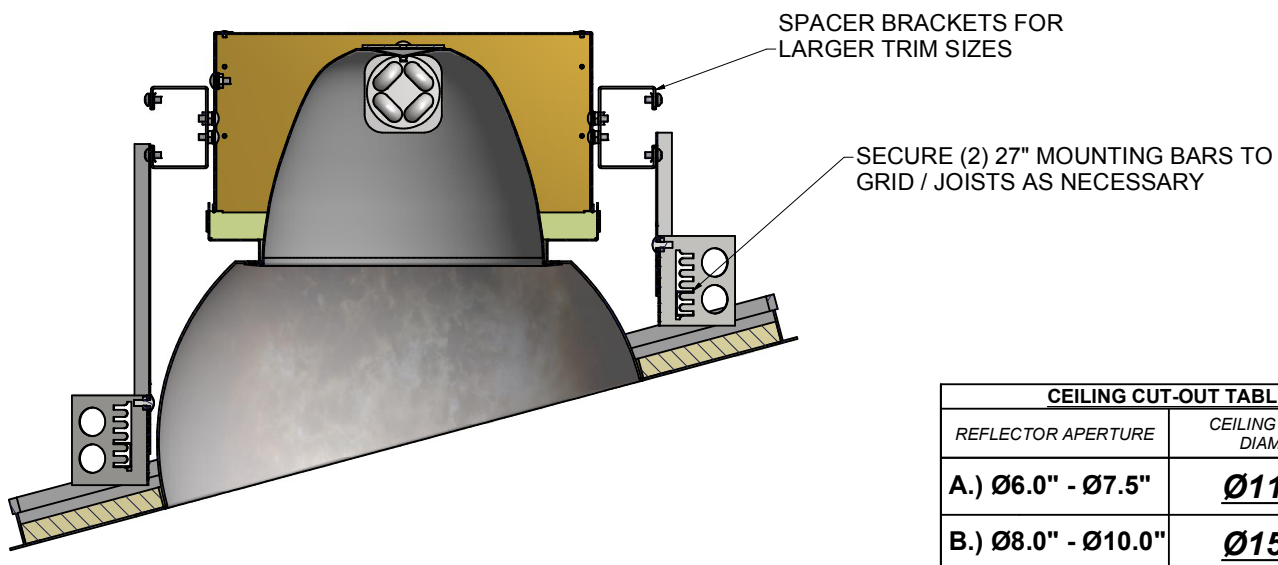
INSTALL IN ACCORDANCE WITH ALL APPLICABLE NATIONAL AND LOCAL ELECTRIC CODES  
INSTALL IN ACCORDANCE WITH ALL MARKINGS APPEARING ON OR INSIDE LUMINAIRES

### **OPTIONAL SLOPE ADAPTER MOUNTING INSTRUCTIONS (OPTION: -82)** (SHOWN WITH A 15° SLOPE FOR REFERENCE)

#### **A.) FOR Ø6.0" - Ø7.5" TRIM APERTURE WITH Ø11.25" CEILING CUTOUT**

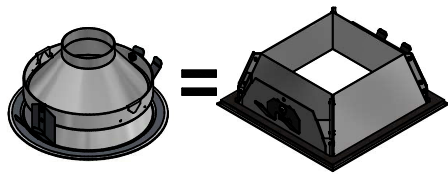


#### **B.) FOR Ø8.0" - Ø10.0 TRIM APERTURE WITH Ø15.25 CEILING CUTOUT**

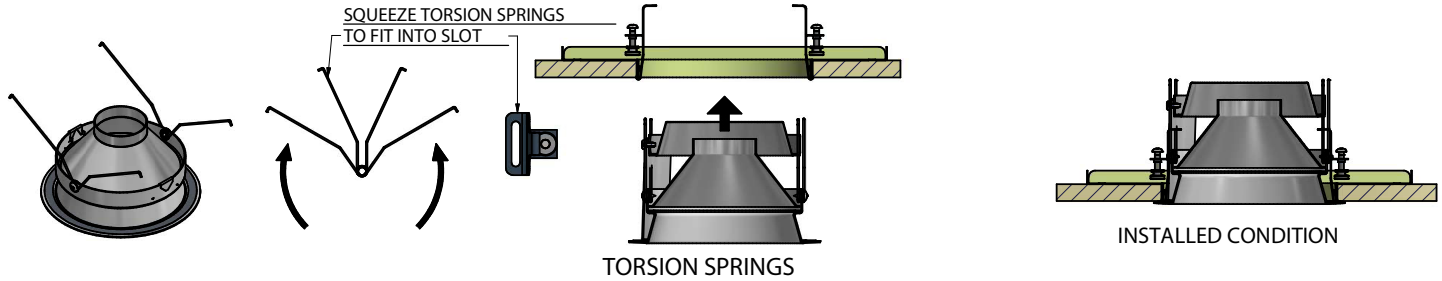
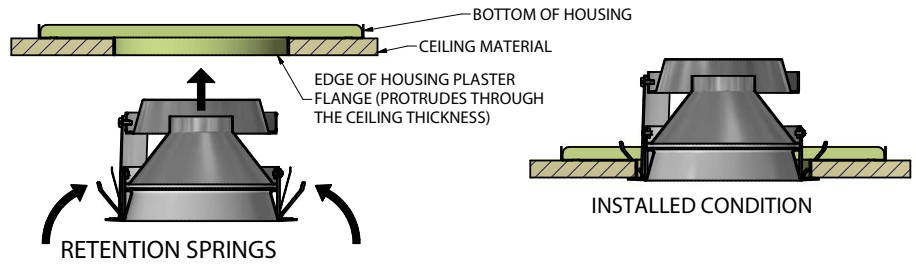


INSTALL IN ACCORDANCE WITH ALL APPLICABLE NATIONAL AND LOCAL ELECTRIC CODES  
INSTALL IN ACCORDANCE WITH ALL MARKINGS APPEARING ON OR INSIDE LUMINAIRES

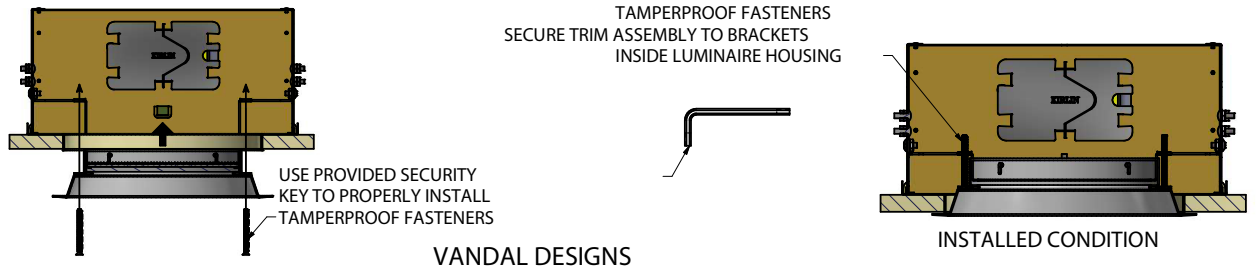
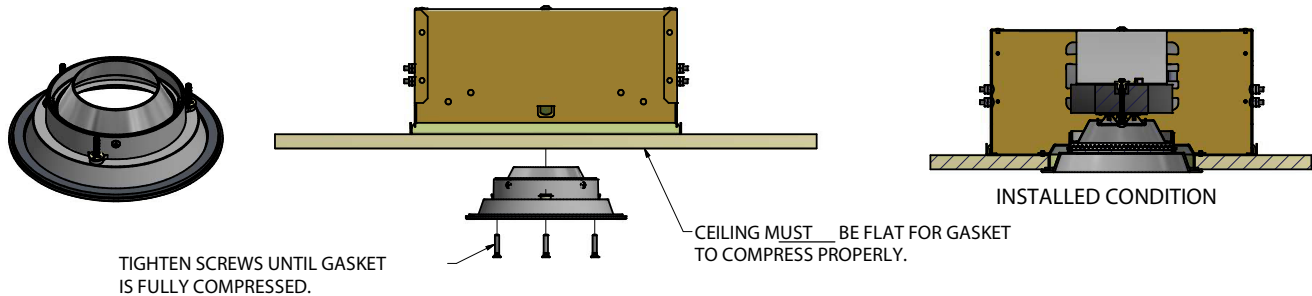
### TRIM INSTALLATION GUIDE



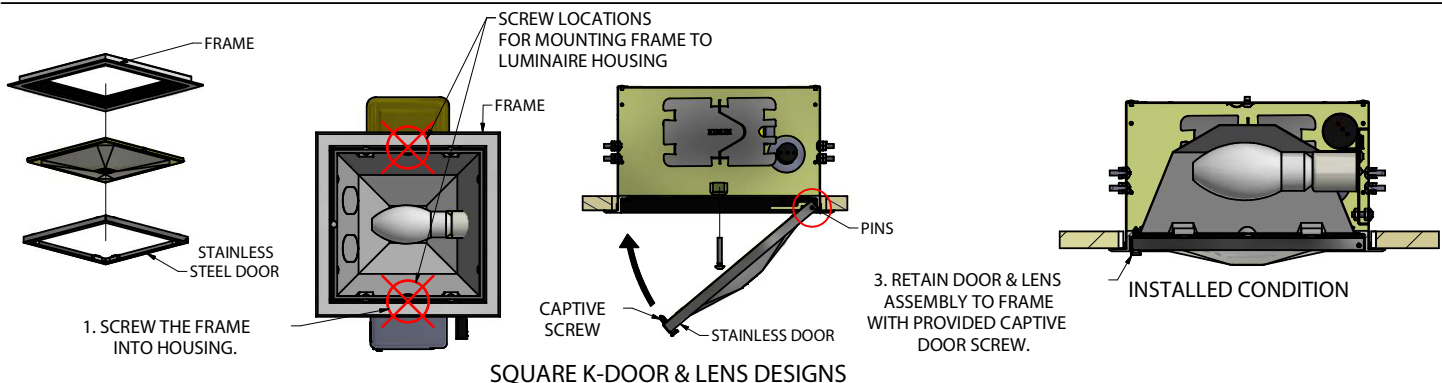
ALL INSTALLATION METHODS SHOWN ARE THE SAME FOR ROUND TRIMS AND SQUARE TRIMS. (ROUND TRIMS SHOWN FOR REFERENCE)



### IP65/IP66 DESIGNS



### VANDAL DESIGNS



### SQUARE K-DOOR & LENS DESIGNS

**INSTALL IN ACCORDANCE WITH ALL APPLICABLE NATIONAL AND LOCAL ELECTRIC CODES  
INSTALL IN ACCORDANCE WITH ALL MARKINGS APPEARING ON OR INSIDE LUMINAIRES**